

SKU: 040028

Version Number: 001



Package Details

for

Newtonia

the challenging soft play room

experia

multisensory for everyone

Experia
Acorn Phase 3, High Street
Barnsley, South Yorkshire
S72 7BD, United Kingdom

T +44 (0)845 644 0988
E info@experia-innovations.co.uk
W www.experia-innovations.co.uk

Newtonia – the challenging soft play room

The incorporation of interactive soft play in this room transforms it into a world of sensory adventure. From the movement of the wobble board and see-saw, to the interactive slide that makes a sound as you use it to enter the colour-changing ball pool; the rewards for interaction mean that users will be more likely to engage with the environment, thereby continuing to practice their gross motor skills and so further develop their vestibular and proprioceptive senses. All Experia Soft Play is made to order in your choice of colours. See below.

Uses

Balance, Colour Recognition, Communication Skills, Gross Motor Skills, Hand/Eye Coordination, Physical Skills, Switching Skills.



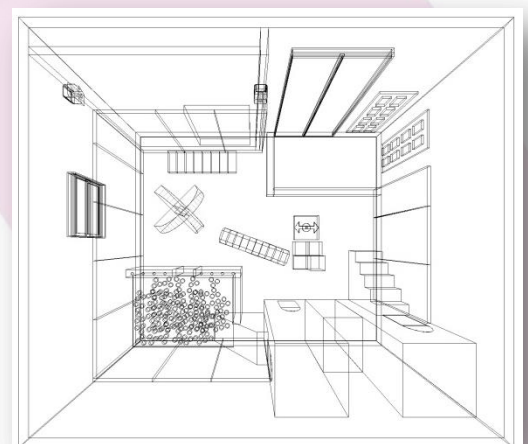
To see a walkthrough of this room visit: <http://www.experia-portal.com/3dwalkthrough/newtonia>

To stand in this room and look around using VR, visit: <http://www.experia-portal.com/3dwalkthrough/newtonia> on your mobile device

experia
Innovation in every sense

Soft Play Colour Swatch

Please fax back on 0845 644 0988



Newtonia – the challenging soft play room – Package Contents



1 x Interactive Ball Pool



1 x IRiS Balance Beam



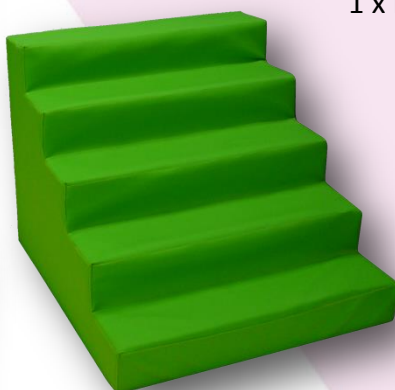
1 x Soft Tunnel



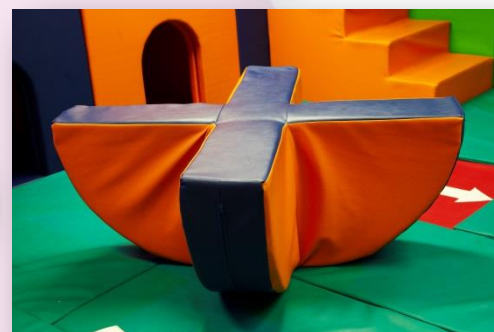
2 x Soft Towers



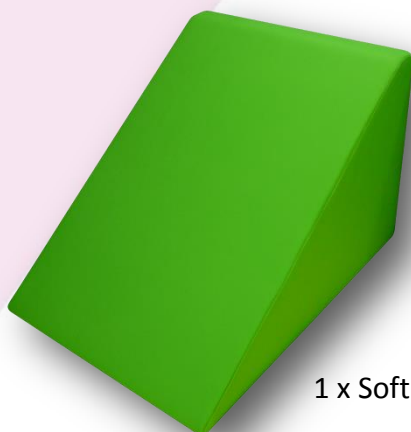
1 x Interactive Piano



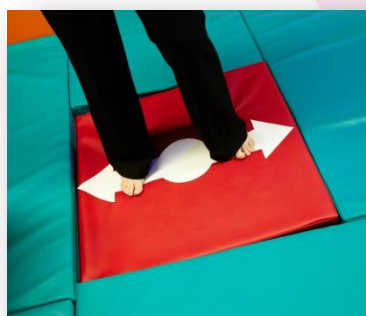
1 x Soft Steps



1 x Seesaw



1 x Soft Slide



1 x Wobble Board

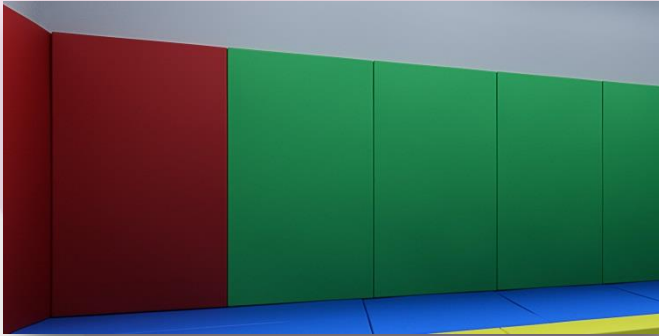


1 x Stepping Stones



1 x Interactive PIR for slide





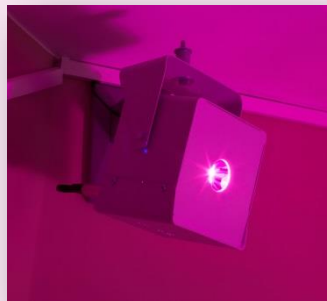
1 x Soft Wall Padding
(quantity as per your room size, survey
may be required)



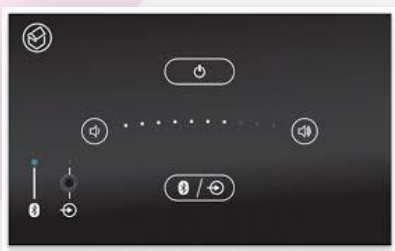
1 x Soft Floor Padding
(quantity as per your room size,
survey may be required)



1 x Soft Kerb (size as per your room,
survey may be required)



2 x IRiS Light Spreaders



1 x Bluetooth Amplifier



1 x Pair of Wall Speakers



1 x Shoe Sorter



3 x Wall Brackets

1 x Fitting Instructions

1 x Instruction Manual

Our recommendation for infrastructure for **Newtonia – the challenging soft play room** is as follows:

- **Electrical**
We would recommend 5 x switched fused spur each controlled via a centrally located grid switch – don't worry if you don't understand this, we will provide an electrical plan upon order confirmation.
- **Lighting**
We would recommend the use of dimmable lighting to allow you to have full control of the ambient light level in the room.
- **Wall Colour**
We would recommend the walls be painted off white, ideally Signal White - RAL 9003 to create a neutral colour and allow any projection to be clearly seen.
- **Floor Covering**
Ideally the floor would be an easy clean vinyl, colour Grey Aluminium - RAL 9007 but the existing may suffice.
- **Heating**
Air conditioning is always recommended if funds allowed, but radiators and the like are acceptable.
- **Ventilation**
A window or silent extraction fan is an acceptable form of ventilation.
- **Air Conditioning**
Air conditioning is always recommended if funds allow. It allows you to have complete control over the temperature within the room and can be used to enhance a sensory story.
- **Window Covering**
We would recommend using either a professional blackout blind or a thick blackout curtain. If using a curtain please bear in mind that there may be some light leakage from either side of the curtain.
- **Hoist**
It is acceptable to have a hoist in the room, just let us know the positioning.
- **Additional**
Ideally, there would be no obstructions below the height of the wall padding. Obstructions will require boxing around which attracts an additional cost.

IRiS Wireless Sensory Equipment – What's the story?

Design Spec 2005 – To create a range of multisensory equipment that allows anyone regardless of age or ability to control each and every piece of equipment through a range of specially designed switches and each and EVERY person gets a response/reward for their activation.

It should be wireless, easy to use and completely open ended. Products we build in 2005/6 should still be controllable from products we make in 2019!

“No one should be barred from using the system, there must be a switch for them! Likewise no person should be barred from getting feedback from the system, there must be a product that stimulates or calms them regardless of their ability!”

Gareth Jones, MD, Experia – 2005.

A decade ago we launched our unique innovative wireless IRiS range of multisensory equipment and changed the way multisensory equipment is used.

IRiS is a range of wireless multisensory products split into two key areas: Talkers (Switches) and Listeners (bubble tubes, fibre optics, etc, etc). There are a range of Talkers (switches) to suit almost all needs, enabling anyone regardless of ability to control any number of products, with a simple pairing system so that you can easily chop and change between talkers and listeners. Plus the range of listeners is huge, each designed to stimulate through a range of senses such as light, sound, aroma, vibration, wind and more.

Years on, we continue to add exciting innovative products to the range to help make learning and development fun, challenging and worthwhile.

In 2008 we introduced our astonishing, easy to use computer software allowing users to coordinate all their existing IRiS products to create amazing scenarios based on interaction, calming, theming, storytelling, in fact anything they could imagine – and with a simple mouse click they can share their scenarios around the world! Based on very simple drag and drop technology we even saw many pupils create their own scenarios.

2013 saw the introduction of our IRiS+ app, stuffed full with unusual ways of switching including rotation, movement and much more. The beauty of IRiS+ is that whilst the app is brand new it can still control the IRiS equipment we made all those years ago! And any new products we create will all still be compatible!

IRiS is the only system that is TRULY open ended, TRULY life changing and lovingly designed and manufactured in the UK.

If you want the best that never grows old, never becomes obsolete, never has to be replaced, then IRiS is for you!

Why Choose Experia?

- Trusted company, incorporated 12 years ago.
- Over 31 years of experience in multisensory environments means we understand your needs.
- Over 1,000 rooms installed across the world in diverse countries as USA, Canada, Hong Kong, Kuwait, Holland, France, Spain, Denmark, Dubai, Lebanon, Mexico, Mauritius, Cyprus and many more.
- We won't try and sell you any equipment that you don't need: only what will make a real difference to your specific users.
- At the forefront of cutting edge multisensory technology.
- Products designed and manufactured in the UK, by Experia.
- All products endure a rigorous 21 point test before despatch.
- Low running costs.
- Quick to respond to any issues should they arise.
- Friendly people who are easy to work with, providing a stress free experience.
- Well-trained conscientious staff.
- Three year warranty on all products manufactured by Experia.
- Comprehensive training - what's the use of great equipment, if you don't know how to use it?
- Currently working toward ISO9001 accreditation.
- Ongoing Support.
- Ongoing Training.

Don't take our word for it, here's what some of our clients say...

"I would recommend Experia to any company looking to enhance children's sensory experience. Their knowledge, responsiveness and professionalism has allowed us to create an exciting new sensory experience for all the children in Greenwich"

Victoria Lambert, Goldie Leigh

"The school's Multisensory Interactive Learning Environment (MiLE) is very successful in promoting learning through a new sensory curriculum."

Ofsted inspection at Rosehill School

"The equipment that Experia installed all those years ago had made a massive positive impact on all of the people who have used it. Experia have also been on hand to help with deal with maintenance of the equipment and also helping us to decide when and how to upgrade the equipment. We are extremely happy with the continued service we receive from Experia and would recommend them to anyone looking for a knowledgeable and reliable company to help you with your project."

Brad Bradstock, The Redway School

"I just wanted to say a massive thank you to all the staff at Experia for your help and support in the installation of our Sensory Room and Soft Play Area at the Chase Leisure Centre. We recently had our official opening and the feedback we received from families, partners and members has been fantastic."

Paul Smith, Sports Development Manager

"Nothing is too much trouble and we wouldn't hesitate to recommend them to anyone else who is looking for a good equipment supplier. Our dream families are also very pleased with the help and support they've received from Experia."

Wendy Gray, Dreams Co-ordinator, Dreams Come True

"We've seen instant benefits. There has been a noticeable increase in the motivation of the children, some are now able to control the lighting effects for themselves, and there has also been an increase in their visual response."

Tracey Penman, Assistant Head Teacher at Manor Mead School

"Experia have been official sensory equipment suppliers for the Lord's Taverners since 2010. Since the partnership began they have supplied us with sensory and soft play equipment for over 100 special needs schools and have always provided a consistent and professional service.

"The team at Experia take great care to ensure every school is purchasing equipment that best meets the needs and requirements of the pupils and they ensure that the teachers/carers are trained to use the equipment to its full potential. All equipment is made in the UK and any adaptations a school may require are easily implemented by skilled and trained technicians.

"The Lord's Taverners are very happy to endorse Experia's work, they go above and beyond to ensure the end product is the best it can be."

Nicky Pemberton, Director of Charitable Programmes, Lord's Taverners

And here's some more happy people...

"Ridgeway has always been progressive in terms of using technology to drive forward the opportunities for our pupils - our motto is 'a voice for all' and the MiLE system offers us a fantastic, breath-taking environment that makes learning meaningful, relevant and fun."

Darryl Morgan, Headteacher, Ridgeway School

"Experia are an excellent and efficient company to deal with. As well as installing the room within a tight time period at short notice, they provided a fantastic room demonstration at our sensory room opening event for service users, family and friends as well as the young adults themselves. This was followed by thorough training for our staff so we are able to use the room in a person-centred way for each individual based on their needs/choices.

"The equipment is absolutely top notch and provides our young adults here with the opportunity to control every aspect of the room via the wireless switch/Qube which they love and find incredibly liberating. Thanks Experia!"

Bex Marshall, Adult Care Activities Co-ordinator

"I would like to recommend Experia for all your sensory needs. The customer service was exemplary with friendly staff who were flexible and helpful. Even the engineers who installed the equipment were highly professional and efficient. The adviser himself was very experienced, enthusiastic and knowledgeable, he even called in later to ensure we knew how to get the best out of every piece of equipment.

"Although I met with other suppliers, Experia were by far the most competitive, professional and accommodating. The children were delighted when they returned and discovered our wonderful new sensory space."

Rebecca Mawson, Langdon Academy

"Experia have provided us with fantastic training and support to help us make the most of our sensory room. Our children love using the sensory room for stories, games, cause and effect, phonics and relaxation sessions. It is a brilliant tool for learning!"

Selene Hinton, Carlton Digby School

"Amazing staff to plan your sensory room offering help advice and ongoing support. You are always on the other end of a phone or email. Arranging training is easy and fast full of fun and positive support. Your service people are very helpful, polite and great to ask questions of too. What more can I say we all love our Studio".

Angela Millar, St Crispins School

"We are delighted with the products and the service we have received from Experia. Right through from Sales to the Installation Team – we have been impressed by the quality of service we have received. Everyone on the team has been friendly and we have been offered high levels of technical support. Aftercare has been excellent. We are thrilled with our sensory room – and highly recommend Experia"

Julie Sarti - Colne Engaine CEVA Primary School