

SKU: 040031

Version Number: 001



Package Details

for

Lagom

the intensive interactive
sensory room

experia
multisensory for everyone

Experia
Acorn Phase 3, High Street
Barnsley, South Yorkshire
S72 7BD, United Kingdom

T +44 (0)845 644 0988
E info@experia-innovations.co.uk
W www.experia-innovations.co.uk

Lagom – the intensive interactive sensory room

Step your multisensory experience up a level with the Lagom sensory environment, which introduces a wider range of interactive products in order to continue to inspire the imagination. Each item in the room comes with its own wireless controller to allow multiple users to develop crucial lifeskills at the same time, whether that's working individually on their own goals simultaneously, or together in groups to encourage social interaction.

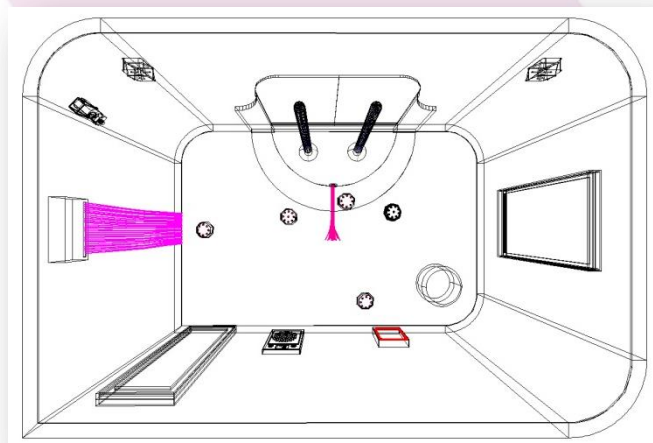
Uses

Cause and Effect, Colour Recognition, Development of Choice, Fine Motor Skills, Gross Motor Skills, Hand/Eye Coordination, Interaction & Relaxation, Shape Recognition, Social Interaction, Switching Skills, Theming, Tracking Skills, Turn-Taking.



To see a walkthrough of this room visit: <http://www.experia-portal.com/3dwalkthrough/lagom>

To stand in this room and look around using VR, visit: <http://www.experia-portal.com/3dwalkthrough/lagom> on your mobile device



Lagom – the intensive interactive sensory room – Package Contents



1 x Superactive LED
Bubble Tube - 2m



1 x Superactive LED
Bubble Tube - 1.5m



1 x Acrylic Mirrors
(1.5m x 1.2m)



2 x Soft Wall Pads



2 x Bubble Tube
Brackets



1 x Semi Circle Bubble Tube Plinth (1.2m x 600mm
x 400mm) & Curved Floor Padding (2m dia)



1 x Superactive
Fibre Optic Strands



1 x Superactive
Infinity Tunnel



1 x Aurora LED
Projector Bundle



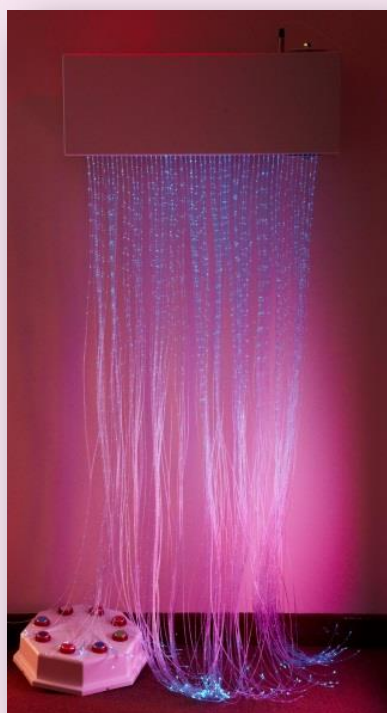
1 x Musical Touchwall



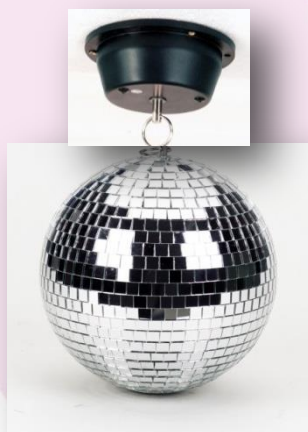
2 x Superactive Light Spreaders



1 x Bean Bag



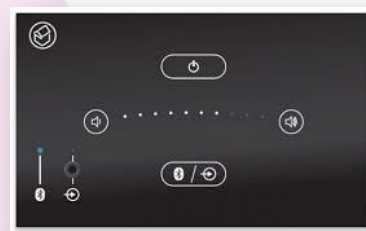
1 x Superactive
Fibre Optic Cascade



1 x Mirror Ball & Motor



1 x Calming RGB Pinpoint



1 x Bluetooth Amplifier



3 x Wall Bracket



1 x Pair Wall Speakers

1 x Instruction Manual

1 x Fitting Instructions



1 x BCB - Bubble Tube Additive



1 x Bubble Tube Emptying Kit
with foot pump

Our recommendation for infrastructure for **Lagom – the intensive interactive sensory room** is as follows:

- **Electrical**
We would recommend 10 x switched fused spur each controlled via a centrally located grid switch – don't worry if you don't understand this, we will provide an electrical plan upon order confirmation.
- **Lighting**
We would recommend the use of dimmable lighting to allow you to have full control of the ambient light level in the room.
- **Wall Colour**
We would recommend the walls be painted off white, ideally Signal White - RAL 9003 to create a neutral colour and allow any projection to be clearly seen.
- **Floor Covering**
Ideally the floor would be grey tiles, colour Grey Aluminium - RAL 9007 but the existing may suffice.
- **Heating**
Air conditioning is always recommended if funds allowed, but radiators and the like are acceptable.
- **Ventilation**
A window or silent extraction fan is an acceptable form of ventilation.
- **Air Conditioning**
Air conditioning is always recommended if funds allow. It allows you to have complete control over the temperature within the room and can be used to enhance a sensory story.
- **Window Covering**
We would recommend using either a professional blackout blind or a thick blackout curtain. If using a curtain please bear in mind that there may be some light leakage from either side of the curtain.
- **Hoist**
It is acceptable to have a hoist in the room, just let us know the positioning.

Why Choose Experia?

- Trusted company, incorporated 12 years ago.
- Over 31 years of experience in multisensory environments means we understand your needs.
- Over 1,000 rooms installed across the world in diverse countries as USA, Canada, Hong Kong, Kuwait, Holland, France, Spain, Denmark, Dubai, Lebanon, Mexico, Mauritius, Cyprus and many more.
- We won't try and sell you any equipment that you don't need: only what will make a real difference to your specific users.
- At the forefront of cutting edge multisensory technology.
- Products designed and manufactured in the UK, by Experia.
- All products endure a rigorous 21 point test before despatch.
- Low running costs.
- Quick to respond to any issues should they arise.
- Friendly people who are easy to work with, providing a stress free experience.
- Well-trained conscientious staff.
- Three year warranty on all products manufactured by Experia.
- Comprehensive training - what's the use of great equipment, if you don't know how to use it?
- Currently working toward ISO9001 accreditation.
- Ongoing Support.
- Ongoing Training.

Don't take our word for it, here's what some of our clients say...

"I would recommend Experia to any company looking to enhance children's sensory experience. Their knowledge, responsiveness and professionalism has allowed us to create an exciting new sensory experience for all the children in Greenwich"

Victoria Lambert, Goldie Leigh

"The school's Multisensory Interactive Learning Environment (MiLE) is very successful in promoting learning through a new sensory curriculum."

Ofsted inspection at Rosehill School

"The equipment that Experia installed all those years ago had made a massive positive impact on all of the people who have used it. Experia have also been on hand to help with deal with maintenance of the equipment and also helping us to decide when and how to upgrade the equipment. We are extremely happy with the continued service we receive from Experia and would recommend them to anyone looking for a knowledgeable and reliable company to help you with your project."

Brad Bradstock, The Redway School

"I just wanted to say a massive thank you to all the staff at Experia for your help and support in the installation of our Sensory Room and Soft Play Area at the Chase Leisure Centre. We recently had our official opening and the feedback we received from families, partners and members has been fantastic."

Paul Smith, Sports Development Manager

"Nothing is too much trouble and we wouldn't hesitate to recommend them to anyone else who is looking for a good equipment supplier. Our dream families are also very pleased with the help and support they've received from Experia."

Wendy Gray, Dreams Co-ordinator, Dreams Come True

"We've seen instant benefits. There has been a noticeable increase in the motivation of the children, some are now able to control the lighting effects for themselves, and there has also been an increase in their visual response."

Tracey Penman, Assistant Head Teacher at Manor Mead School

"Experia have been official sensory equipment suppliers for the Lord's Taverners since 2010. Since the partnership began they have supplied us with sensory and soft play equipment for over 100 special needs schools and have always provided a consistent and professional service.

"The team at Experia take great care to ensure every school is purchasing equipment that best meets the needs and requirements of the pupils and they ensure that the teachers/carers are trained to use the equipment to its full potential. All equipment is made in the UK and any adaptations a school may require are easily implemented by skilled and trained technicians.

"The Lord's Taverners are very happy to endorse Experia's work, they go above and beyond to ensure the end product is the best it can be."

Nicky Pemberton, Director of Charitable Programmes, Lord's Taverners

And here's some more happy people...

"Ridgeway has always been progressive in terms of using technology to drive forward the opportunities for our pupils - our motto is 'a voice for all' and the MiLE system offers us a fantastic, breath-taking environment that makes learning meaningful, relevant and fun."

Darryl Morgan, Headteacher, Ridgeway School

"Experia are an excellent and efficient company to deal with. As well as installing the room within a tight time period at short notice, they provided a fantastic room demonstration at our sensory room opening event for service users, family and friends as well as the young adults themselves. This was followed by thorough training for our staff so we are able to use the room in a person-centred way for each individual based on their needs/choices.

"The equipment is absolutely top notch and provides our young adults here with the opportunity to control every aspect of the room via the wireless switch/Qube which they love and find incredibly liberating. Thanks Experia!"

Bex Marshall, Adult Care Activities Co-ordinator

"I would like to recommend Experia for all your sensory needs. The customer service was exemplary with friendly staff who were flexible and helpful. Even the engineers who installed the equipment were highly professional and efficient. The adviser himself was very experienced, enthusiastic and knowledgeable, he even called in later to ensure we knew how to get the best out of every piece of equipment.

"Although I met with other suppliers, Experia were by far the most competitive, professional and accommodating. The children were delighted when they returned and discovered our wonderful new sensory space."

Rebecca Mawson, Langdon Academy

"Experia have provided us with fantastic training and support to help us make the most of our sensory room. Our children love using the sensory room for stories, games, cause and effect, phonics and relaxation sessions. It is a brilliant tool for learning!"

Selene Hinton, Carlton Digby School

"Amazing staff to plan your sensory room offering help advice and ongoing support. You are always on the other end of a phone or email. Arranging training is easy and fast full of fun and positive support. Your service people are very helpful, polite and great to ask questions of too. What more can I say we all love our Studio".

Angela Millar, St Crispins School

"We are delighted with the products and the service we have received from Experia. Right through from Sales to the Installation Team – we have been impressed by the quality of service we have received. Everyone on the team has been friendly and we have been offered high levels of technical support. Aftercare has been excellent. We are thrilled with our sensory room – and highly recommend Experia"

Julie Sarti - Colne Engaine CEVA Primary School